

PAD SITE FOR SALE/BTS

2354 WEST CENTRAL AVE | EL DORADO, KS 67042



W. Central Ave. CPD - 19,316

Join Harbor Freight Tools, Bealls and Newly Expanded Goodwill!

PROPERTY INFORMATION

- Shopping Center Major Renovation - **COMPLETE**
- Easy Access to I-35 (Kansas Turnpike)
- Strong Tenant Mix
- Pad Site - \$300,000
- Ground Lease or Build to Suit
- Cross Easement Parking
- Drive-Thru Available
- Up to 2500 SF Building

DEMOGRAPHICS

	1 MILE	3 MILES	5 MILES
Est. Population:	3,520	12,718	14,848
AVG. HH Income:	\$44,537	\$44,233	\$48,141
Est. # of Employees:	4,371	9,719	10,501



PAD SITE FOR SALE/BTS

2354 WEST CENTRAL AVE | EL DORADO, KS 67042



RENOVATIONS COMPLETED



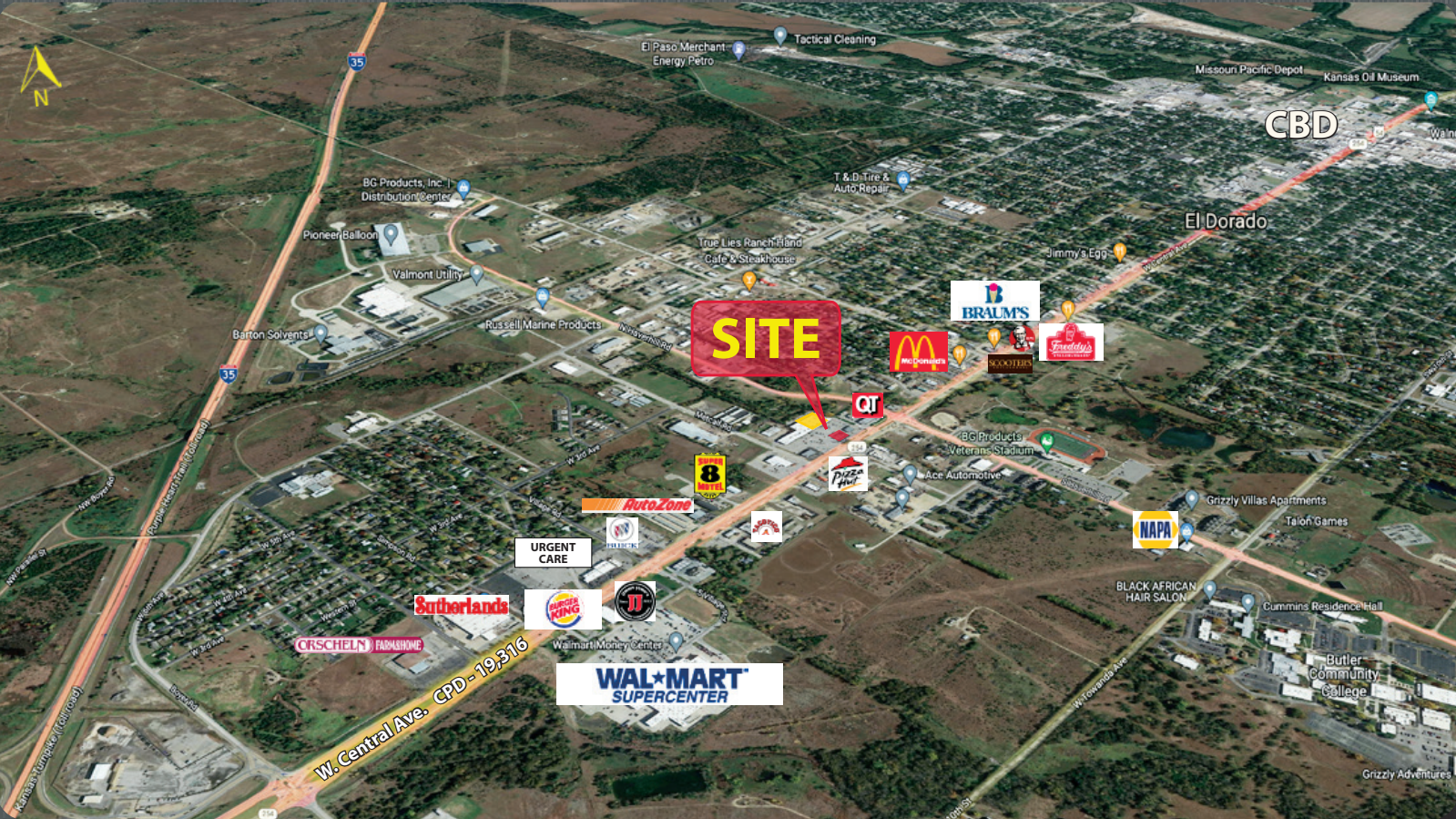
PAD SITE FOR SALE/BTS

2354 WEST CENTRAL AVE | EL DORADO, KS 67042



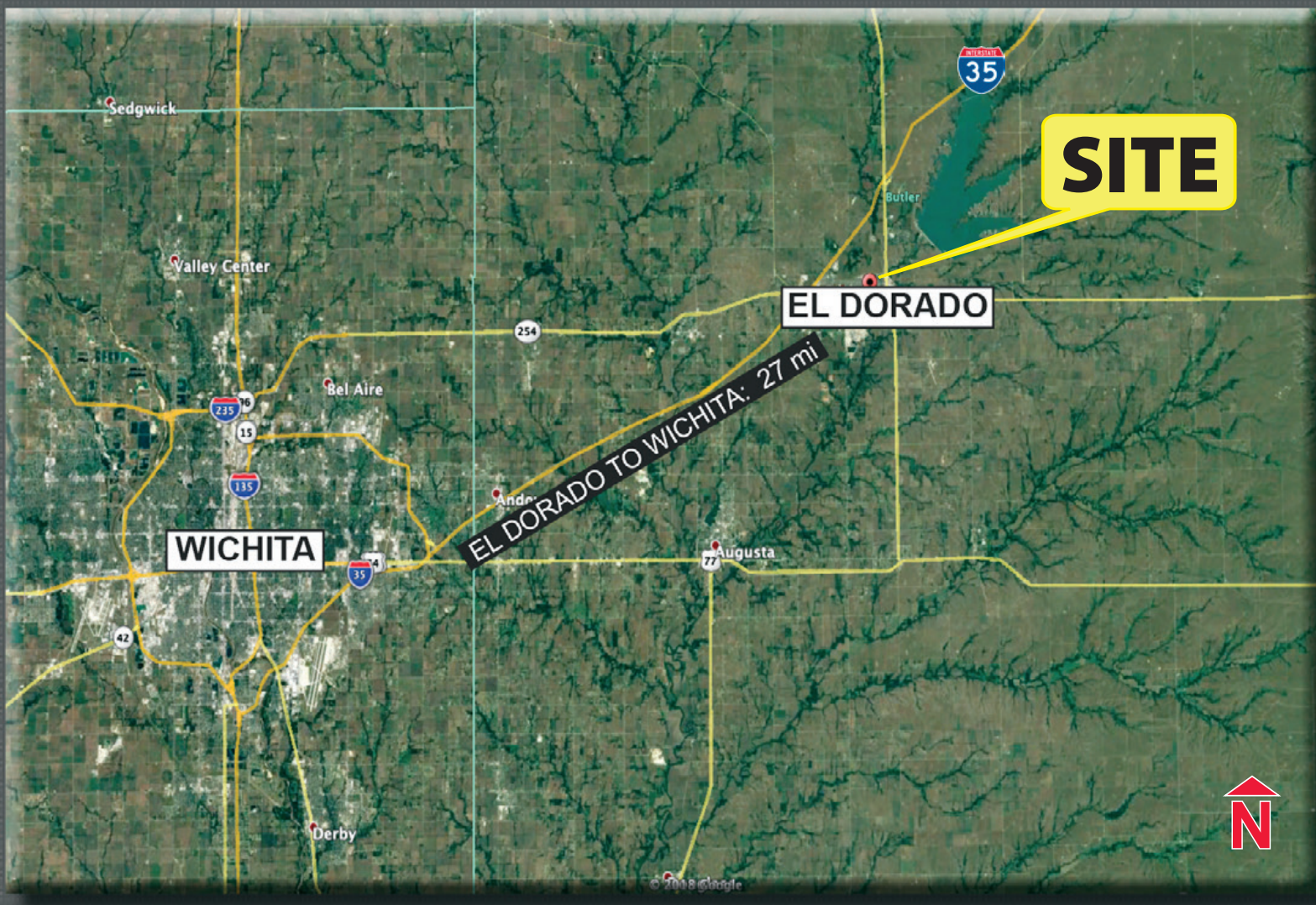
PAD SITE FOR SALE/BTS

2354 WEST CENTRAL AVE | EL DORADO, KS 67042



PAD SITE FOR SALE/BTS

2354 WEST CENTRAL AVE | EL DORADO, KS 67042



Gasperi Group Commercial Real Estate, LLC
13132 Reeds Road, Overland Park, Kansas 66209



This document has been prepared by Gasperi Group for advertising and general information only. Gasperi Group makes no guarantees, representations or warranties of any kind, expressed or implied, regarding the information including, but not limited to, warranties of content, accuracy and reliability. Any interested party should undertake their own inquiries as to the accuracy of the information. Gasperi Group excludes unequivocally all inferred or implied terms, conditions and warranties arising out of this document and excludes all liability for loss and damages arising there from. This publication is the copyrighted property of Gasperi Group and/or its licensor(s). © 2025. All rights reserved.